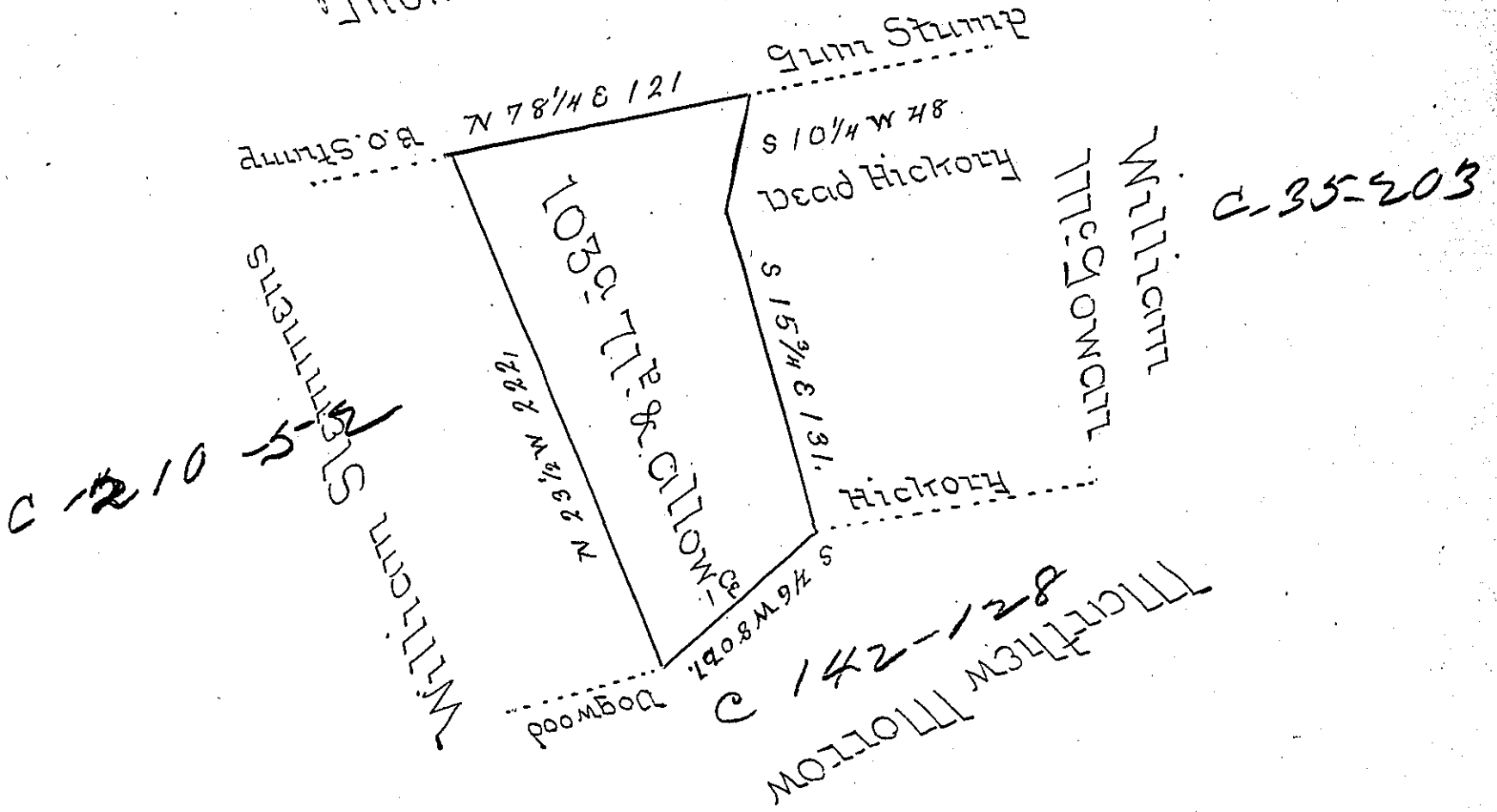


C-210-5-2
Thomas Stemmers



A draught of a tract of land surveyed November the 6th 1815 in pursuance of a warrant granted to Rob^t Lowan for 100 acres dated June the eight 1815 Situate in Canton Township on the Waters of Charleers creek in Washington county called the Widower containing one hundred and three acres and seventy one perches and allowance of six per Cent for roads &c

Richard A. Beech Esq^r } William Hawkins U.S.
 Secy. of Penn^a }

The above described tract of land is well improved and a family residing on the same

William Hawkins U.S.

IN TESTIMONY that the above is a copy of the original remaining on file in the Department of Internal Affairs of Pennsylvania, made conformably to an Act of Assembly approved the 16th day of February, 1833, I have hereunto set my Hand and caused the Seal of said Department to be affixed at Harrisburg, this second day of January 1906.

Loac R. Brown
 Secretary of Internal Affairs.